

- 1 ELECTRICAL CONTRACTOR SHALL INSTALL OCCUPANCY MOTION SENSOR SWITCH FOR CONTROL OF LIGHTS AS SHOWN. ELECTRICAL CONTRACTOR SHALL SET SWITCH FOR 15 MINUTES. MOUNT AT 44" AFF.
- 2 CIRCUIT SALES EXIT AND EMERGENCY/NIGHT LIGHT BATTERY BACK-UP BALLAST TO CIRCUIT A-1
- 3 REFER TO SHEET E02.01 FOR VIEW MONITOR POWER REQUIREMENT. REFER TO ARCHITECTURAL RCP PLAN FOR EXACT LOCATION.
- 4 ELECTRICAL CONTRACTOR SHALL FURNISH AND INSTALL OUTLET FOR INTERNALLY ILLUMINATED LED GINGHAM TRANSOM STOREFRONT, CONNECTION TO TRANSFORMER. REFER TO ARCHITECTURAL DRAWINGS FOR MORE INFORMATION.
- 5 CONTRACTOR TO ROTATE FIXTURES SO THAT UL LABELS ARE NOT VISIBLE TO CUSTOMER.
- 6 ELECTRICAL CONTRACTOR SHALL FURNISH AND INSTALL OUTLET FOR INTERNALLY ILLUMINATED LED GINGHAM ABOVE CANOPY & ON SIDE PANELS, CONNECTION TO TRANSFORMER. REFER TO ARCHITECTURAL DRAWINGS FOR MORE INFORMATION.
- 7 PROVIDE 1000 WATT DIMMER FOR PENDANTS TO CONTROL PENDANT LIGHTS "PP".
- 8 FURNISH AND INSTALL JUNCTION BOX, TOGGLE DISCONNECT SWITCH IN NON-VISIBLE LOCATION, AND FINAL CONNECTION FOR 120 VOLT SIGN. SIGN IS FURNISHED WITH INTERNAL GROUND FAULT PROTECTION BY SIGN MANUFACTURER PER N.E.C. ARTICLE 600-235. VERIFY EXACT LOCATION OF JUNCTION BOX WITH SIGN. MANUFACTURER (REUSE EXISTING JUNCTION BOX AND CONDUIT INTO SPACE IF ALREADY INSTALLED. VERIFY IN FIELD EXACT LOCATION ON CANOPY). FOR CANOPY POWER SEE SHEET A08.01 FOR WALL PENETRATION IN ROUTING CONDUIT.
- 9 NOTE: THE CIRCUIT FOR SIGNAGE MUST BE A DEDICATED ISOLATED 3-LINE CIRCUIT CONSISTING OF HOT, NEUTRAL, AND GROUND WIRES LEADING DIRECTLY TO THE PANEL.
- 10 LIGHT FIXTURES TO BE INSTALLED IN MILLWORK FIXTURE, NOT IN CEILING. VERIFY WITH LSD&C. REFER TO SHEET E02.01 FOR POWER REQUIREMENTS.
- 11 "AA" LIGHTS ARE REMODEL HOUSING AND DO NOT INSTALL DURING ROUGH FRAMING.
- 12 PROVIDE OCCUPANCY SENSOR TO AUTOMATICALLY TURN OFF WITHIN 30 MINUTES OF ALL OCCUPANTS LEAVING THE SPACE.
- 13 CIRCUIT NONSALES EXIT AND EMERGENCY/NIGHT LIGHT BATTERY BACKUP BALLAST TO LOCAL CIRCUIT AHEAD OF ALL SWITCHING.
- 14 CIRCUIT SALES EXIT AND EMERGENCY/NIGHT LIGHT BATTERY BACK-UP BALLAST TO CIRCUIT A-42

ELECTRICAL LIGHTING PLAN KEYNOTES

NTS

42N-E0301-000-NOTE

D

11/17/11

NOTE:
REFER TO SHEET E04.01 FOR ELECTRICAL LIGHTING SCHEDULE AND LIGHT DESCRIPTIONS.

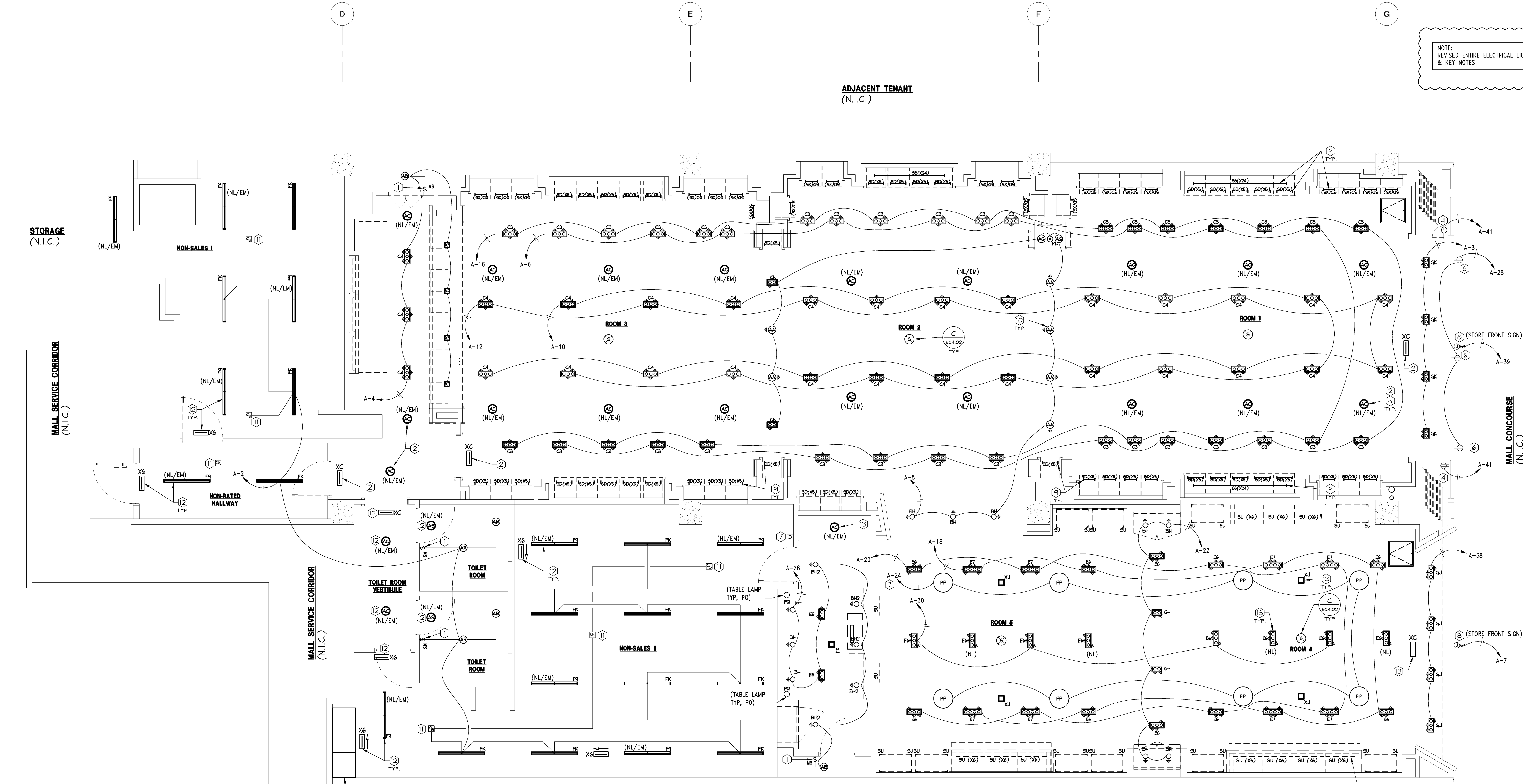
NOTE:
REFER TO SHEET E05.01 FOR PANEL SCHEDULE AND LIGHTING ZONE DESIGNATIONS.

NOTE:
ELECTRICAL CONTRACTOR SHALL REFER TO ARCHITECTURAL SHEETS FOR MOUNTING HEIGHTS AND INSTALLATION DETAILS FOR SUSPENDED LIGHTING IN NON-SALES AREA.

NOTE:
GENERAL CONTRACTOR SHALL VERIFY CEILING FIRE RATING WITH ARCHITECT, AND BOX OR TENT ALL RECESSED LIGHT FIXTURES, IF REQUIRED, TO MAINTAIN CEILING FIRE RATING.

LANDLORD COMMENTS:
BACKLIT PATTERN TO BE ISOLATED/ ADJUSTABLE "DIMMER"

ELECTRICAL LANDLORD'S COMMENTS:
ALL HOME RUNS TO TENANT'S PANELS SHALL BE STEEL CONDUIT OR EMT.
ALL EXPOSED WIRING IN CEILINGS OR INTERIOR WALLS MUST BE IN RIGID STEEL CONDUIT OR EMT.
ALL WIRING IN LANDLORD'S DEMISING WALLS MUST BE IN RIGID STEEL CONDUIT OR EMT.
CONDUIT SHALL NOT BE SUPPORTED FROM THE ROOF DECK.
COORDINATE ALL FLOOR CUT MEANS AND METHODS OR ROUTING CONDUIT THROUGH THE FLOOR THE MALL OPERATIONS.
VERIFY ALL FIELD CONDITIONS PRIOR TO BID.
TENANT SUPPLIED 24/7 TIMECLOCK SHALL CONTROL THE FOLLOWING: STOREFRONT SIGNAGE, SHOW WINDOW LIGHTS, SHOW WINDOW RECEPTACLES AND ENTRY LIGHTS.
COORDINATE ALL NEW ROUTING OF CONDUIT, FEEDER CABLES AND CONNECTIONS TO LANDLORDS MAIN ELECTRICAL GEAR WITH MALL OPERATIONS.



NOTE:
REVISED ENTIRE ELECTRICAL LIGHTING PLAN & KEY NOTES

